

Narrandera Public School Informer



Adams Street Narrandera NSW 2700
Tel: (02) 6959 2144 Fax: (02) 6959 3274
Email: narrandera-p.school@det.nsw.edu.au
Website: www.narrandera-p.schools.nsw.gov.au
"We learn and meet on Wiradjuri Country"

Principal - Mr Brent Fennessy

Term 3, Week 9

Tuesday, 12th September, 2023

Calendar

Week 9

Wednesday, 13th September

◆ Year 5/6 Canberra excursion

Thursday, 14th September

◆ Year 5/6 Canberra excursion

Friday, 15th September

◆ Year 5/6 Canberra excursion
◆ Rugby Gala—Year 3 & 4
◆ Dental forms due
◆ Yr 6 photos due for farewell slideshow

Week 10

Thursday, 21st September

◆ 150th Birthday Celebration: Whole school Celebration from 12.30pm @ CRC

Friday, 22nd September

◆ 150th Birthday Celebrations: Open Afternoon & Community BBQ from 4.30pm @ NPS
◆ Last Day of Term

Narrandera Public School
Invites you to celebrate their

150TH

birthday celebrations

● **THURSDAY**
SEPTEMBER 21ST
WHOLE SCHOOL ASSEMBLY
AND CELEBRATION
12.30PM CRC PLAZA THEATRE,
35 BOLTON STREET,
NARRANDERA
ALL COMMUNITY MEMBERS
WELCOME TO ATTEND

● **FRIDAY**
SEPTEMBER 22ND
OPEN AFTERNOON @
SCHOOL FROM 4.30PM
JOIN US FOR A COMMUNITY
BBQ, TOUR OF OUR
SCHOOL, GAMES &
ACTIVITIES.
WE WILL ALSO BE BURYING
A TIME CAPSULE!

Join us for the party of the year!



From the Principal

What an exceptional week our students had last week as our Bush to Bowl garden project came to fruition. We extend a heartfelt "Thank you" to our community members who joined us on Saturday morning to put the finishing touches on the project and enjoy a delightful barbecue with our Parent and Community (P&C) group.



Last week, Mrs. Jamieson, Mr. Svensen, and I had the privilege of spending the week with some prominent figures in the field of Mathematics. We are brimming with excitement about what we've learned and how it will benefit our students in the future. There are some thrilling developments in store for mathematics education in the next 12 months that will undoubtedly enrich the learning experience for all our students.

On Tuesday, we warmly welcomed our prospective Year 3 students for the 2024 academic year. They exhibited brilliant behaviour and are poised to become valuable additions to our school community. We eagerly anticipate their future visits over the coming months as they familiarise themselves with all aspects of our school.

This week marks a significant event as our Stage 3 students embark on an excursion to Canberra. These major outings always create cherished memories, and we have every confidence that our students will represent our school with utmost distinction.

As we count down to our 150th anniversary, preparations are in full swing. With just over a week to go, rehearsals are in top gear, and we extend a warm invitation to as many of you as possible to join us for our celebratory assembly on Thursday 21st, or our open afternoon on Friday 22nd, commencing at 4:30 pm. It promises to be a momentous occasion as we celebrate this remarkable milestone in our school's history.

Brent Fennessy
Principal



Find us on
facebook



Principal:	Brent Fennessy
Assistant Principal:	Julie Neville Stage 1
Assistant Principal:	Hayley Ruffles Stage 2
Assistant Principal:	Julie-Anne Rowe/Toni Kerr Stage 3

Phone: 02 6959 2144

Fax: 02 6959 3274

Email Address: narrandera-p.school@det.nsw.edu.au

School Website: www.narrandera-p.schools.nsw.gov.au

Aboriginal Education News

Bush to Bowl

Last week we had Bush to bowl visit to plant the community native garden. On Thursday & Friday every class had the chance to get outside and get their hands dirty by doing some planting, weeding or mulching. Little Booris playgroup also had a visit to the garden on Thursday to plant some natives. Bush to bowl also shared some information with our students about native plants and how they can be used in our everyday life.

On Saturday our school was open for community to come in and finish the planting of the native garden. What a great turn out! Bush to Bowl provided over 250 plants to go into the ground that will provide our community with an edible garden well into the future. Some of the plants we are growing are lemon myrtle, strawberry gum, native thyme, native ginger, lomandra, banksia, lilly pilli, mountain pepper berry, blue quandong and many more.

A huge thank you to Elders Narrandera for the donation of a 1000L water tank, Grants Saw Mill for the donation of bark chip mulch, NPS P&C for cooking lunch, Narrandera Garden Club, Landcare & our amazing community that came and helped out. This project was made possible by the positive partnership between NPS, NEIS, NHS, Narrandera AECG & Bush to bowl.



Simone & Richard
Aboriginal Education Officers



CANTEEN NEWS
SPECIALS

RECESS SPECIALS
 WEDNESDAY - FRUIT CUPS - \$1
 THURSDAY - HONEY JOYS - 50C
 FRIDAY - CARAMEL SLICE - \$1



RUGBY
GALA DAY

YEAR 3 & 4

FRIDAY SEP 15TH

**NOTES & MONEY DUE
MONDAY 11TH SEP**



SCHOOL HAT

NARRANDERA PS
STRIVE TO EXCEL

**\$10 FROM THE
FRONT OFFICE**

No hat, no play.

★ ASSEMBLY 8.9.23 ★



GOLD STAR



SILVER STAR



BRONZE STAR



BANNER



GOLD AWARDS



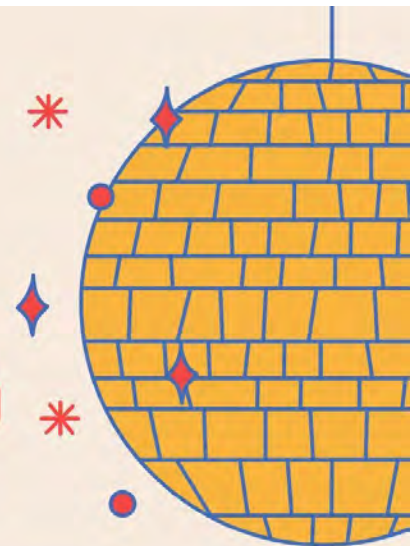
MIDDLE SIZED MERIT



CLASS SPECIAL AWARDS

5M News

IN WRITING WE ARE FOCUSING ON OUR NATURAL DISASTERS RESEARCH AND WRITING A PROPERLY STRUCTURED INFORMATIVE TEXT ABOUT OUR NATURAL DISASTER OF CHOICE. IN MATHEMATICS, WE HAVE BEEN FOCUSING ON SEVERAL IMPORTANT SUBJECTS, INCLUDING MEASUREMENT, ADDITION AND PLAYING SOME MATH GAMES TO HELP DEVELOP OUR ENJOYMENT OF MATHS.



IN DANCE WITH MS. RUFFLES, THE WHOLE OF YEAR 5 HAVE BEEN PRACTICING OUR PERFORMANCE FOR THE 150TH ANNIVERSARY. ALMOST EVERY AFTERNOON AFTER RECESS WE HAVE BEEN WORKING HARD TO COMPLETE OUR DANCE AND MAKING SURE WE ARE COMPLETELY PREPARED FOR THE 150TH ANNIVERSARY CONCERT, AN EVENT THAT IS HAPPENING AT THE END OF TERM 3.



ON THURSDAY WEEK 8, OUR CLASS WENT TO THE INDIGENOUS GARDEN LOCATED IN THE STAGE 2 PLAY AREA THAT MRS SEYMOUR, RICHARD, SIMONE, THE COMMUNITY AND THE BUSH TO BOWL PEOPLE ARE CULTIVATING. THIS IS SO THAT THE SCHOOL CAN SELL AGRICULTURAL PRODUCTS TO A RESTAURANT IN THE CITY IN EXCHANGE FOR SOME MONEY, AS WELL AS TO SIMPLY HELP OUR INDIGENOUS COMMUNITY AT NPS GROW. WE HELPED WITH MOVING DEAD SPIKY BRANCHES OUT OF THE GARDEN TO THE OTHER SIDE OF THE TREE, IN ORDER TO CLEAR THE AREA FOR FUTURE GROWTH. A BUNCH OF US ALSO CAME TO THE SCHOOL ON SATURDAY MORNING, ALONG WITH MEMBERS OF THE COMMUNITY TO HELP BUILD OUR NEW GARDEN.



MC class news

Drumming with NHS



Earlier this term the High School girls' groups visited our school.

Our class taught them how to drum and do patterns and rhythms. Lucy showed them how to be a leader and did a great job, this was followed by them joining in and showing us what they could do. I'm sure this was a great experience for everyone. Mrs Lucas and Ami found it a bit tricky but we all stuck to it and had fun.



RIVERINA REPRESENTATIVE

RIVERINA RUGBY UNION

SIENNA LYONS

On the 4th and 5th September I represented Riverina at Rugby Union in Mudgee. There were 13 teams.

We won all our games on Monday. We played West Sydney, North Coast and North West. On Tuesday we lost to North Sydney.

This meant we had to play West Sydney again, this time they won by a penalty try. Our playoff match was against Western. We won this to finish in 5th place.

I had a great time, it was an amazing experience.

by Sienna Lyons

p&c
Uniform
Shop

UNIFORM PRICE LIST

Open 5 days a week in school hours - 8.45am until 3.15pm

Closed in the holidays



**GIRLS WINTER
PANTS - \$50**

**GIRLS WINTER
TUNIC - \$50**

**SUMMER UNIFORM
- \$42**

JACKET - \$45

JUMPER - \$30

TIGHTS - \$10

**SPORTS TRACK
PANTS - \$20**

**SPORTS SHORT -
\$15**

SALE

Previous style
track pants and
sports shorts
available for \$10

UNIFORMS AVAILABLE AT TRIMS COLLECTIVE ARE.....

- Sports shirt with emblem
- Blue polo shirt with emblem
- Grey shorts and long pants





NSW HEALTH

FREE DENTAL CLINIC



THE MOBILE DENTAL VAN WILL BE VISITING NPS FROM MONDAY 16TH OCTOBER TO FRIDAY 3RD NOVEMBER

NSW HEALTH IS PLEASED TO OFFER YOUR CHILD A **FREE** SCHOOL-BASED DENTAL CHECK UP IN A COMFORTABLE AND FAMILIAR ENVIRONMENT AT SCHOOL.

A PARENT INFORMATION AND CONSENT PACK HAS BEEN SENT HOME WITH STUDENTS.

PARENTS & CARERS WHO WANT THEIR CHILD TO RECEIVE CARE ARE ADVISED TO:



READ THE INFORMATION PACK

Read all the information provided in the pack



COMPLETE THE FORMS

Carefully complete all the fields of the consent forms



RETURN THE FORMS

Return the consent forms to the school by

FRIDAY 15TH SEPTEMBER



FATHER'S DAY





AVAILABLE NOW!

We are excited to announce our school offers a flexible and simplified way parent/carers can make payments

The Parent Portal

- Easily make a payment online
- Download your receipt
- Sign and return permission notes digitally
- Use any credits on your account to make payment
- View your complete payment history
- Request a refund

School Bytes

Register for the Parent Portal via the QR Code or visit <https://portal.schoolbytes.education>

We are excited to announce our new online Parent Portal from School Bytes.

We will be using it for school payments and excursions.
Emails will be sent to you from noreply@mail.schoolbytes.education

The make a payment button will allow you to pay securely, quickly, and easily via credit and debit card (Visa and Mastercard only).

Permission for excursions can be made online via the secure link emailed to families.

While our preference is for payments to be made via the portal, we will still accept payment via cash and EFTPOS paid through the Front Office.



NPS 150th Open Afternoon & Community BBQ – Safety Brief Friday 22 September 2023

1. This event is for Narrandera Public School students, staff, parents, carers and visitors.
2. First Aid
 - Visitors and or students seeking first aid are to contact the nearest staff member or Principal.
 - School first aid officers and first aid kits available on site.
3. All visitors / parents / carers and students are to enter and exit the school through the front gate located in Adams street or via the side gate in Douglas Street.
4. ALL visitors are to refer to the schools induction safety brief provided in this newsletter.
5. Evacuation areas are shown on the school site plan, which is available in the **school's induction safety brief and is located in the school foyer.**
6. Emergency procedures are included in the schools induction safety brief and are located in the school foyer.
7. Food: A list of ingredients for all food provided, will be available at the BBQ area.
8. Toilets:
 - Children to use student toilets located at the school.
 - Visitors are to use staff toilets located in Block G. Directions can be obtained from a staff member.

Health and Safety Induction Briefing

Health and Safety Directorate

For your safety and the safety of others, it is a condition of entry to this site that you take a few minutes to read this brochure

Mandatory site requirements:

- All visitors are required to report to reception on arrival.
- Observe all speed, parking and vehicular restrictions.
- Obey all safety signs and barricades.
- Violent, threatening or other unacceptable behaviour is not tolerated on NSW Department of Education premises.

Smoking

Smoking is not permitted on department premises.

Alcohol and Illegal Drugs

Alcohol and illegal drugs are not permitted.

Weapons

Weapons, including knives, are not permitted.

Dangerous Goods and Hazardous Substances

Visitors and contractors intending to bring dangerous goods on site must declare these at reception prior to entering the site.

Reporting Injuries/Hazards

All hazards and incidents must be reported to the main office.

- Injuries will be recorded in the *Register of Injuries*.
- First Aid treatment is available on site.

Local level induction

A local level induction will be provided upon entry to the school detailing site safety considerations including the age and nature of students.

Contractors

All **Property NSW** and **School Infrastructure NSW** contractors must:

- complete the **Facility Site Visit Log**
- advise the status of the job before leaving the site.

All **independent contractors** must in addition:

- produce all documentation in accordance with the local workplace safety procedures for independent contractors. Form 034 is located on the [Contractors, Volunteers and Visitor Safety page](#)
 - sign visitors register
- For all other contractors/visitors essential requirements necessary to deliver required service are checked and recorded at a local level, this may include:
- Insurances and up to date qualifications
 - Appropriate level of [Working With Children Check](#) (including volunteers).

Health and Safety Induction Briefing

NSW Department of Education

WELCOME TO

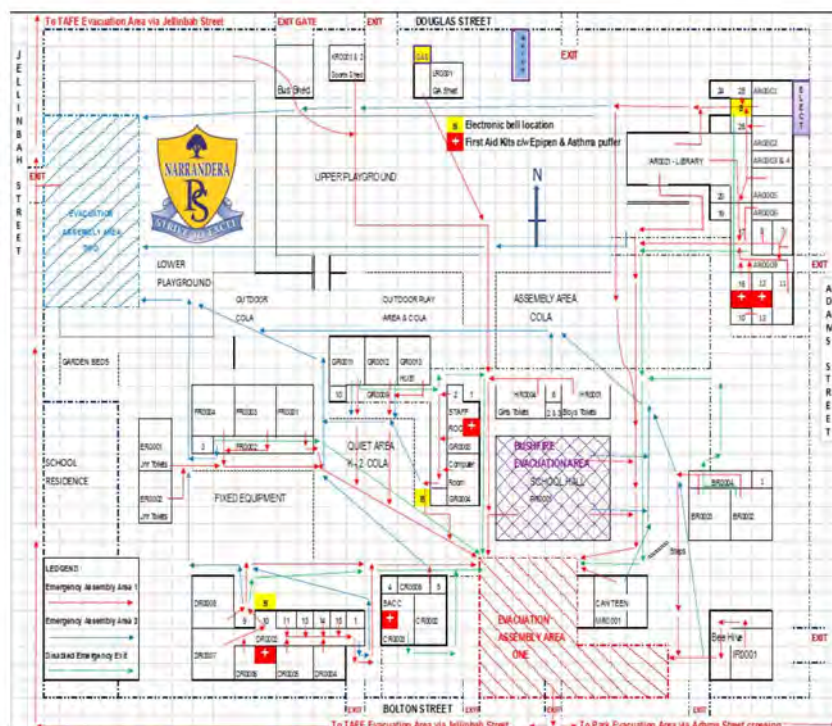
NARRANDERA PUBLIC SCHOOL

The New South Wales Department of Education is committed to the work health and safety of employees, students, contractors and visitors

NSW Department of Education (FORM360_HEALTHANDSAFETYINDUCTIONBRIEFING_V2) Health and Safety Directorate, 1800 811 433

Safety Induction Briefing

Emergency Procedures



NSW Department of Education (FORM360_HEALTHANDSAFETYINDUCTIONBRIEFING_V2) Health and Safety Directorate, 1800 811 433

Emergency Procedures

In a life-threatening emergency, or when Police, Fire, or Ambulance Services are required.

DIAL 000 immediately

For all emergencies, injuries, hazards or near misses, contact the front office on: 02 6959 2144

Evacuation: Alarm 3 short bells repeated at regular intervals

Proceed to the safest, closest assembly point located on the map. Follow warden instructions.

Lockdown: One long bell

Proceed to your closest classroom, follow school staff instructions, or if alone lock the doors (if possible) and remain silent until the chief warden gives the all clear.

Lockout: One long bell

Entry to and from the site will be closed. Follow the instructions of the chief warden until advised that you can continue as usual.

First Aid Officer is: Karla Jamieson, Toni Kerr, Richard Gilbert

First Aid Officers Located: Rooms AR0001 / GR0004 / DR0005

First Aid Kits Located: AR0012, GR0003, AR0016, DR0006

Site Contact: Brent Fennessy (Principal) A Block - AR0011



COMMUNITY EVENTS

Page 15

Tuesday, September 12th

40th ANNUAL *Narrandera Town & Country*
Open Gardens

FEATURING "BEREMBED STATION"
Sunday, 22nd October, 2023
ONLINE TICKETS AVAILABLE FROM EVENTBRITE

Online ticket holders can collect maps from Plant Stall at Mario Bashir Park from 9.00am

\$25 PER PERSON ONLINE
 (incl. Devonshire Tea + 25% Discount at Shady Gum Nursery)

GARDENS OPEN UNTIL 5.00pm
 Lunch available from \$10 at Berembred Station
 In aid of Narrandera Can Assist
 Enquiries: 0428 597 655
 Email: narranderaopenclub@gmail.com
 facebook.com/narranderaopenclub

Can Assist
 CANCER ASSISTANCE NETWORK

ROCKIN' EAST
 a weekend of 50s & 60s rock n' roll

Moondoggies
 SUN 1st 1.00 - 4.00pm \$20pp
 MON 2nd 7.30 - 11.30pm \$20pp

Gedupndans
 SUN 1st 7.00 - 11.00pm \$20pp

Rockin' Tac
 SUN 1st 7.00 - 11.00pm \$20pp

Midnight Drifters
 SUN 1st 7.30 - 11.30pm \$20pp

Johnny's Rockers
 DANCE LESSONS
 SAT 30th 10.30am - Monday 520pp
 SAT 30th 2.30 - 10.00pm (Dinner)
 SUN 1st 10.00am - Monday 520pp

DJ Glenn Hunt
 SUN 1st 7.00 - 11.00pm \$20pp
 SAT 30th 4.00 - 5.00pm \$20pp
 SUN 1st 7.00 - 8.00pm \$20pp

rockin' the whole
OCTOBER LONG WEEKEND
Narrandera
FRI SEPT 29 - SUN OCT 1 at the **NARRANDERA**
rockinoneast.com.au
 Package deal for the full weekend \$100.00 per person (does not include the cost of Johnny's Rockers Dance lessons)

Our School has students who are highly allergic to NUTS and NUT PRODUCTS
We seek your co-operation in trying to keep our school NUT FREE

LEETON SCHOOL DENTAL CLINIC

The School Dental Clinic is available for all children aged from 0 - 18 years of age. We encourage all parents to make an appointment for your child to have a full dental check. Treatment at our clinic is **FREE** to all children who have a Medicare card. To make an appointment please telephone our call centre on

1800 450 046

We hope to see you soon!!!

SCHOOL HOLIDAY

SPRING FUN AT BIDGEE STRAWBERRIES & CREAM

WEDNESDAY 27TH SEPTEMBER	TUESDAY 3RD OCTOBER	WEDNESDAY 4TH OCTOBER	THURSDAY 5TH OCTOBER	FRIDAY 6TH OCTOBER
MORNING SESSION 9:30am - 11:30am KARI ART	MORNING SESSION 9:30am - 11:30am KARI ART	AFTERNOON SESSION 2pm - 5pm PINOT & PICASSO	MORNING SESSION 10am - 12:30pm AD ABORIGINAL ART	AFTERNOON SESSION 1pm - 3pm AD ABORIGINAL ART
KIDS ABORIGINAL ART WORKSHOP (12 & UNDER)	KIDS ABORIGINAL ART WORKSHOP (12 & UNDER)	TEENS PAINTING	TEENS & ADULTS LEAVING WORKSHOP	TEENS ABORIGINAL JEWELLERY MAKING (13-18 Y/O)
AFTERNOON SESSION 12:30pm - 2:30pm KURAKI ART	AFTERNOON SESSION 12:30pm - 2:30pm KURAKI ART	EVENING SESSION 6pm - 9pm PINOT & PICASSO		EVENING SESSION 6pm - 8pm AD ABORIGINAL ART
TEENS ABORIGINAL ART WORKSHOP (13 - 18 Y/O)	TEENS ABORIGINAL ART WORKSHOP (13 - 18 Y/O)	ADULT PAINTING		ADULTS ABORIGINAL JEWELLERY MAKING

TO BOOK IN - USE THE LINKS BELOW

AD ABORIGINAL ART WORKSHOP: <https://www.eventbrite.com/o/ad-aboriginal-art-69833928423>

PINOT & PICASSO: https://www.pinotandpicasso.com.au/waggawagga/?start_date=now&sessiontype=

— Your Health Link —
National Photographic Competition
HEALTHY LIFE HEALTHY YOU

FREE TO ENTER

Mid North Coast Local Health District
 NSW

www.yourhealthlinkphotocomp.com.au

Primary and high school students are encouraged to grab their trusty camera or mobile phones/tablets to capture images that promote 'Healthy Life - Healthy You' for a chance to win a range of great prizes.

Schools are also the big winners with prizes that support healthy canteen programs.

Competition closes
8 October 2023

Competition Partners





COMMUNITY EVENTS

NSW Department of Education – School Infrastructure



We want to work with businesses within our school communities

Work is available maintaining our schools

School Infrastructure NSW manages a large maintenance program for more than 2,000 schools across all parts of NSW. To do this work, we are looking to engage local businesses, including Aboriginal owned businesses and people.

We want to go local

We have changed our approach. We are now directly managing our facilities and enlisted the support of new facilities maintenance contractors and tradespeople to work directly with us.

Why go local? We want to:

- be more responsive to maintenance issues reported by schools
- ensure we are working with local trades and spending our money in our local communities
- provide better working conditions for local tradespeople, including faster payment terms
- increase employment opportunities for apprentices and trainees in local communities.

Opportunities for Aboriginal businesses

As part of our engagement of local contractors, we are also seeking to grow the number of local Aboriginal businesses we work with and increase employment opportunities for Aboriginal employees, apprentices and trainees.

Our Aboriginal Senior Program Officers are able to help Aboriginal businesses, and local contractors who already employ or are looking to employ Aboriginal employees, apprentices, and trainees.



schoolinfrastructure.nsw.gov.au

NSW Department of Education – School Infrastructure

The trades and services we are looking for include:

- Plumber (including roof and gas)
- Electrician
- Lift Technician
- Refrigeration mechanic
- Glazier
- Hazmat
- Arborist AQ3/ AQ5
- Locksmith
- Cleaner
- Pest control
- Carpet / vinyl
- Data technician
- Security technician
- Painter
- Plasterer / renderer
- Tiler
- Landscaper
- Brick Layer
- Fire management
- Sheet metal
- Concrete
- Removalist
- Playground specialist
- Pool technicians and cleaner
- Carpenters
- Gasfitters
- Test and tag
- Lighting
- Construction
- Gutter cleaning
- Equipment construction and maintenance
- Engineering
- Fencing services building and repair
- Roofing

How can I participate?

We're looking for a wide variety of maintenance services and trades to work with us.

Reach out to our team to find out more and access the documents to apply to work with us.

On approval you'll be setup in our systems and onboarded, with induction covering how to work with us and use our systems. It's easy to work with us! Reach out using the details below.

Get in touch

To register your interest please select a region below or email the relevant office:

Southern NSW Regional Office – snsf.mct@det.nsw.edu.au

South Western Sydney Regional Office – swsf.mct@det.nsw.edu.au

Sydney Regional Office – sydf.mct@det.nsw.edu.au

Western Sydney Regional Office – wsf.mct@det.nsw.edu.au

North Western NSW/New England Regional Office – nwnsf.mct@det.nsw.edu.au

Hunter Central Coast Regional Office – hccf.mct@det.nsw.edu.au

North Coast Regional Office – ncf.mct@det.nsw.edu.au

Northern Sydney Regional Office – nsf.mct@det.nsw.edu.au

schoolinfrastructure.nsw.gov.au

